



**GIA**<sup>®</sup>

**GIA GEMOLOGICAL REPORT**

**EMERALD REPORT**

GIA REPORT 1226166655

November 22, 2021

**DETAILS**

Shape..... **Octagonal**  
 Cutting Style ..... **Step Cut**  
 Transparency ..... **Transparent**  
 Color..... **Green**

**RESULTS**

Species..... **Natural Beryl**  
 Variety..... **Emerald**  
 Geographic Origin ..... **Not Requested**

**TREATMENT** (Scan QR code for more information)

Clarity Enhanced (F2)

Item Description: **One loose stone**

Weight: **7.95 carats**

Measurements: **12.27 x 12.14 x 8.05 mm**

Comments: **Due to their growth conditions in nature and recovery methods, most emeralds contain surface reaching features. For this reason, clarity enhancement is a common trade practice.**

**CLARITY ENHANCEMENT**

NO FISSURES PRESENT	NO OR INSIGNIFICANT CLARITY ENHANCEMENT	QUANTIFICATION OF CLARITY ENHANCEMENT		
		F1	F2	F3
NONE	NO INDICATIONS OF CLARITY ENHANCEMENT	MINOR CLARITY ENHANCEMENT	MODERATE CLARITY ENHANCEMENT	SIGNIFICANT CLARITY ENHANCEMENT

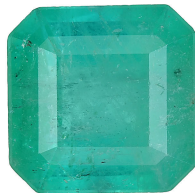


Image is approximate

**FACSIMILE** This is a digital representation of the original GIA Report. This representation might not be accepted in lieu of the original GIA Report in certain circumstances. The original GIA Report includes certain security features which are not reproducible on this facsimile.

[reportcheck.gia.edu](http://reportcheck.gia.edu)

The results documented in this report refer only to the article described, and were obtained using the techniques and equipment used by GIA at the time of examination. This report is not a guarantee or valuation. For additional information and important limitations and disclaimers, please see [www.gia.edu/terms](http://www.gia.edu/terms) or call +1 800 421 7250 or +1 760 603 4500. ©2021 Gemological Institute of America, Inc.



THE SECURITY FEATURES IN THIS DOCUMENT, INCLUDING THE HOLOGRAM, QR CODE AND MICROPRINT LINES, IN ADDITION TO THOSE NOT LISTED, EXCEED DOCUMENT SECURITY INDUSTRY GUIDELINES.